

# The role of the Danish Working Environment Authority to fight work related crime (SD)



# Organization

- The Danish Working Environment Authority (WEA) is organized in 3 inspection centres.
- Around 70 supervisors work daily in the effort against social dumping and work related crime distributed across the three centres.
- Each center has a local organization in relation to the effort.



# Organization to fight social dumping and work related crime

Joint efforts by the authorities since 2012 against social dumping:

- Close cooperation between the Danish Working Environment Authority (WEA), the Tax Agency and the police
- Joint authority controls regionally and nationally
- Coordination in 3 regional planning groups



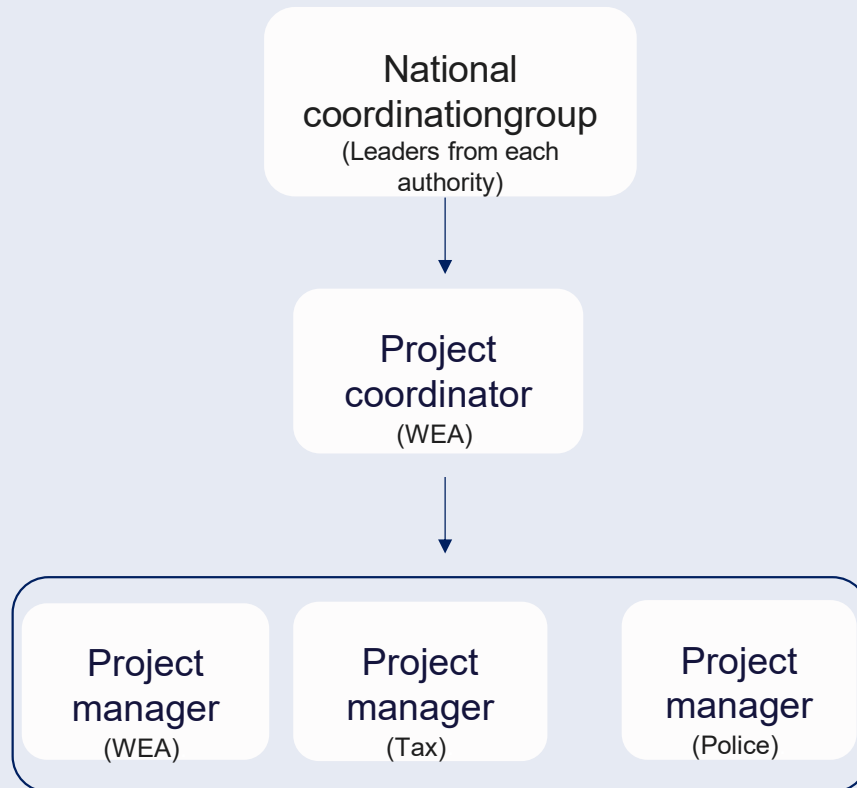
# National Task Force against social dumping and work related crime

Political agreement, March 2023:

- Focus on the gross and complicated cases
- Strengthen cooperation in identifying new cases across the country
- Systematic coordination and use of data about the development of workplace crime, social dumping and the use of illegal labour



# Organization of the Task Force



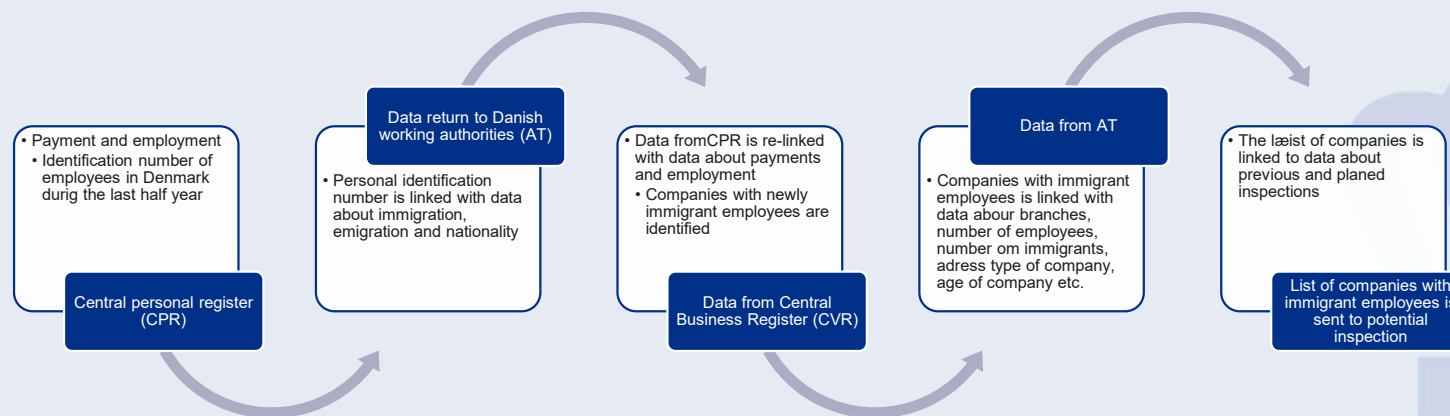
The Task Force works in 3 groups:

- Operational group
- Data group
- Legal group

# Data for identification of control objects I

## 1. Sources of data for inspections – target detail for inspection

- Every employee in Denmark who receive a pay slip is registered in an electronic income register. From this register we identify all unique employees in DK who have had at least one month of work during the last year.
- In the Central personal register we have information about date of entry and exit from Denmark and citizenship of all employees in Denmark
- The Central Business Register contains the unique business number of all companies in Denmark, their name, address, number of employees, type of company etc.
- Data from the Danish Working Authorities are used to check the inspection status.



# Data for identification of control objects II

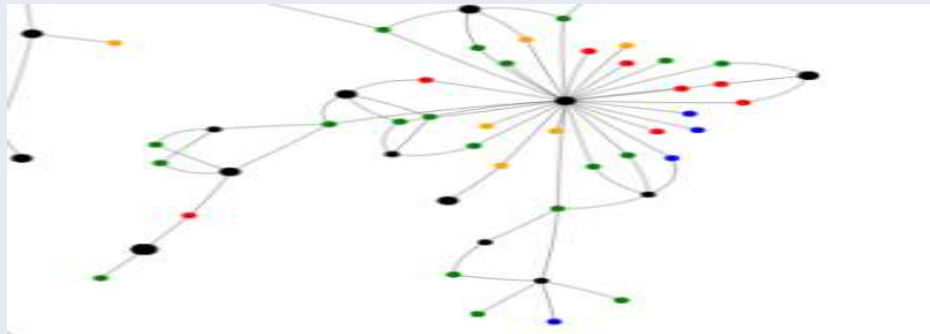
## 1. Sources of data for target inspections in restaurants and bars

- a. From the Danish Agency for International Recruitment and Integration (SIRI) we receive a list of companies engaging foreign employees from third world countries
- b. These data are linked with the same registers as mentioned before.

## 2. Network analysis

- a. From the Central Business Register (CVR) we have information on business owner.
- b. Companies with the same business owners, who have many rulings in different companies are identified by a network analysis.

- Example of a network with an owner in the center



## 1. After linking of data or network analysis a list of companies is generated and send to the regional inspection centers

- a. The list contains name of company, address, number of employees, previous inspections etc.
- b. Based on local knowledge, route planning and previous inspections the companies are prioritized for inspection
- c. Actions taken as a result of inspections is registered and followed
- d. Data from the network analysis is not in production yet





# Thank you for your attention

Camilla Quist Larnkjær  
Inspector and Project manager

cql@at.dk  
+45 7220 9471

November 2024

